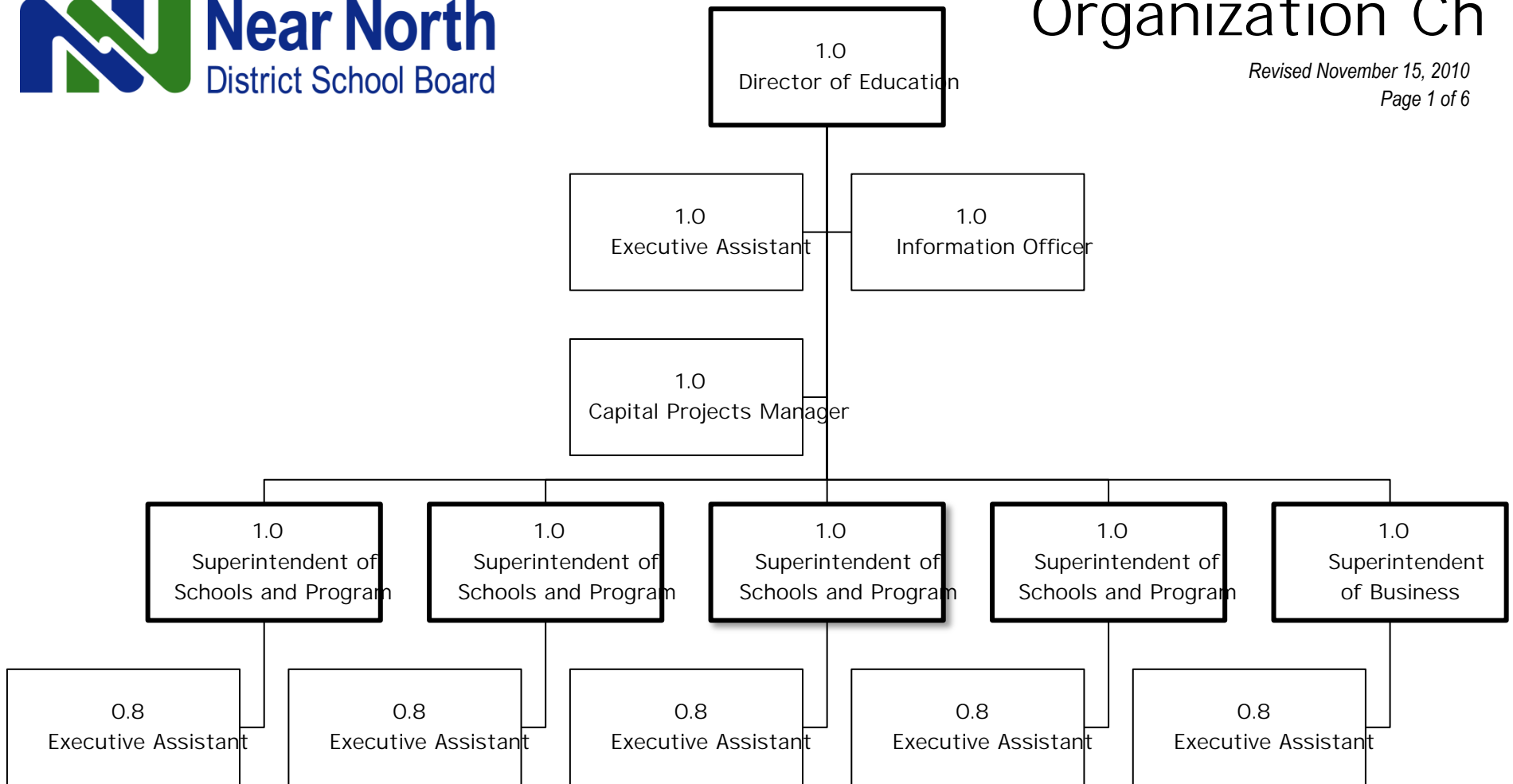




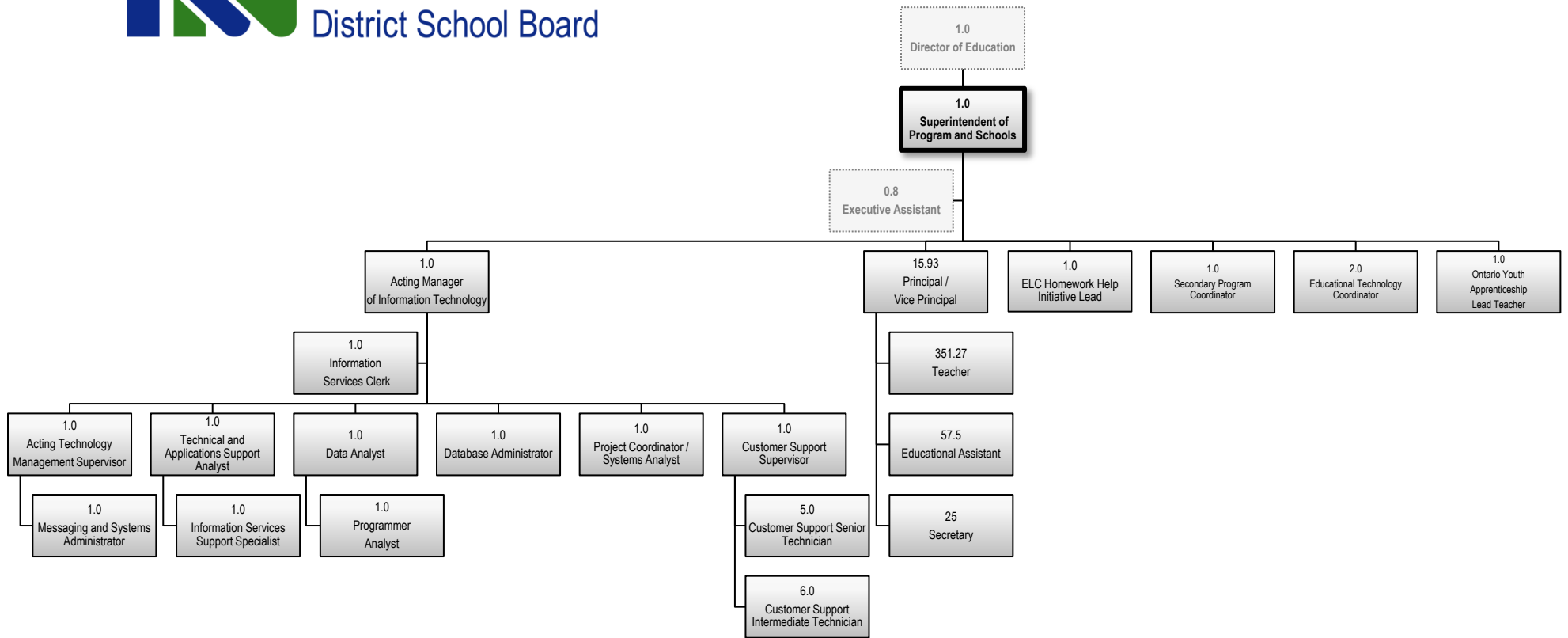
# Organization Ch

Revised November 15, 2010  
Page 1 of 6



Note: Staffing complements are expressed in Full Time Equivalents (F.T.E.)

Our mission is to educate learners to their fullest potential long preparing them for life



# Organization Chart

Revised November 15, 2010

Page 2 of 6

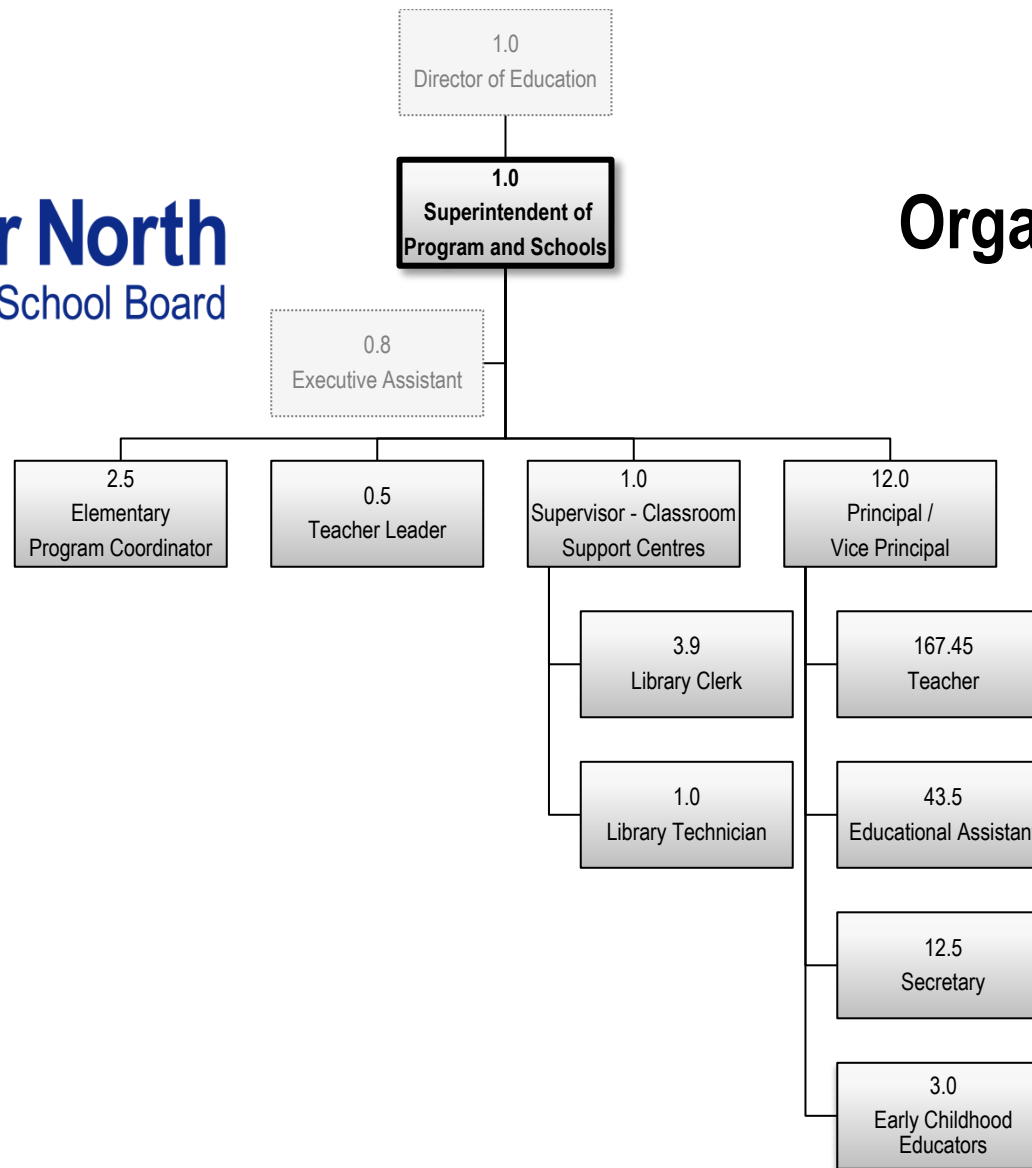
Note: Staffing complements are expressed in Full Time Equivalents (F.T.E.)

Our mission is to educate learners to their fullest potential in preparation for life-long learning.



# Organization Chart

Revised November 15, 2010  
Page 3 of 6



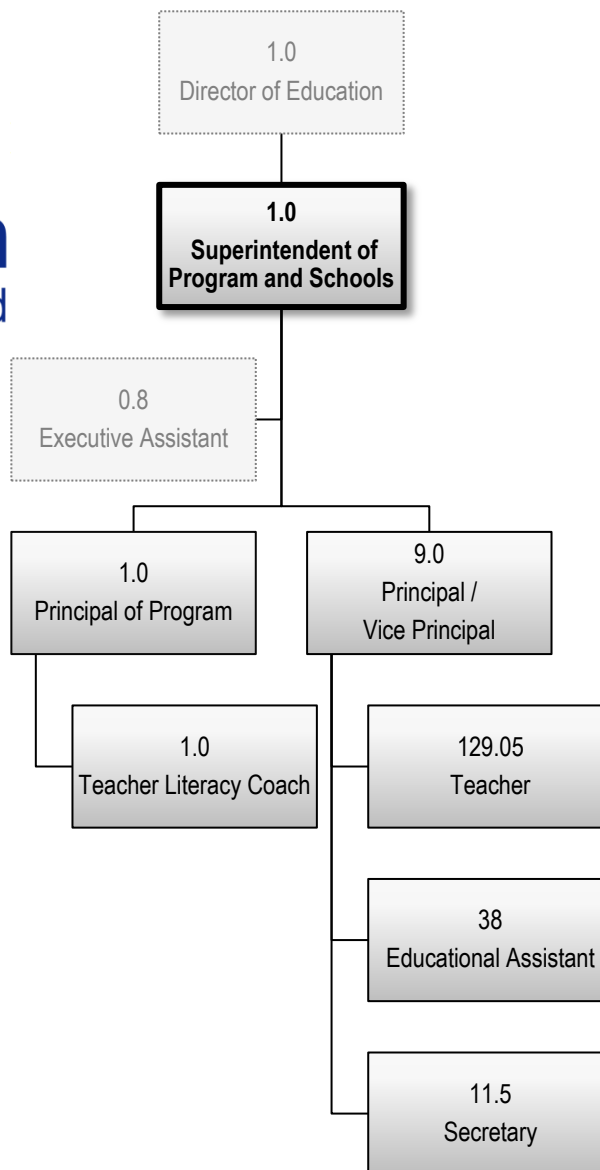
Note: Staffing complements are expressed in Full Time Equivalents (F.T.E.)

Our mission is to educate learners to their fullest potential in preparation for life-long learning.



# Organization Chart

Revised November 15, 2010  
Page 4 of 6



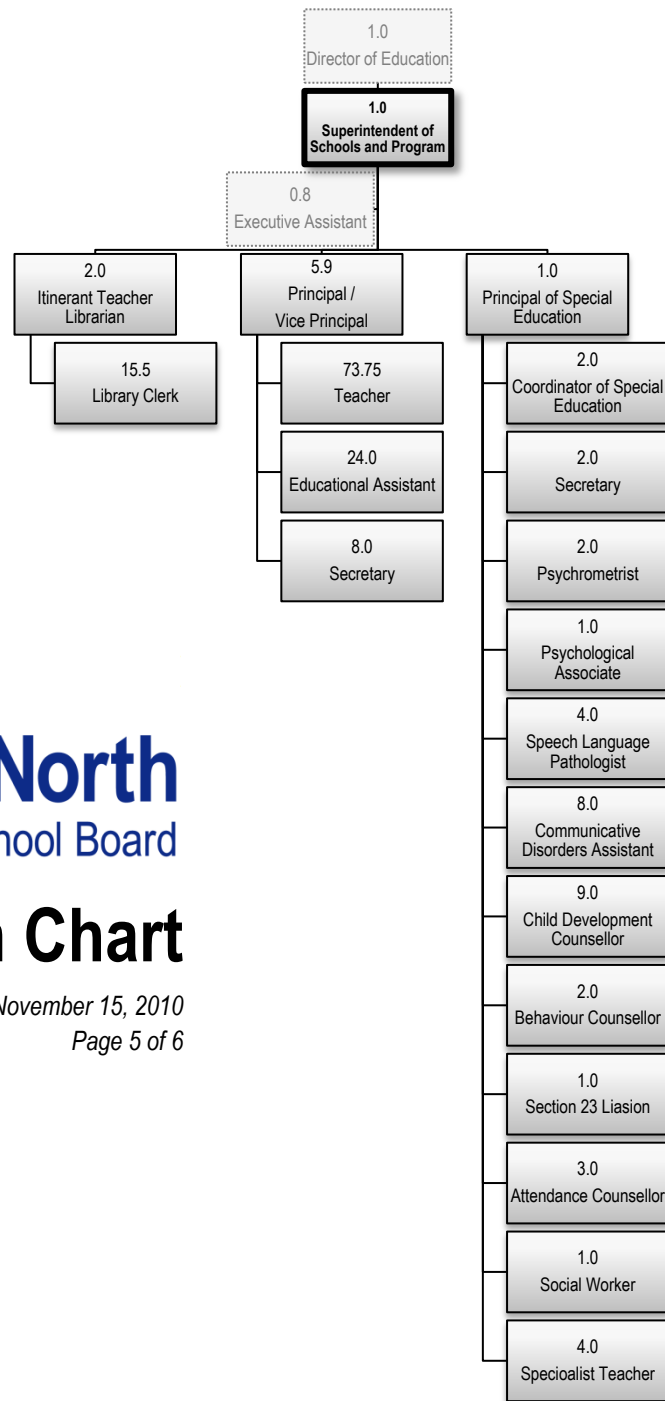
Note: Staffing complements are expressed in Full Time Equivalents (F.T.E.)

Our mission is to educate learners to their fullest potential in preparation for life-long learning.



# Organization Chart

Revised November 15, 2010  
Page 5 of 6



Note: Staffing complements are expressed in Full Time Equivalents (F.T.E.)

Our mission is to educate learners to their fullest potential in preparation for life-long learning.

